



OpenPM² 2018
CONFERENCE

Brussels, Charlemagne | February 1 & 2

Agile PM²
Connecting Agile Practices
to PM² projects

Tiago.palhoto@ext.ec.europa.eu



Tiago Palhoto
European Commission

First things first...

Thank you!!



Alexandra Michotte



Anita Varotto

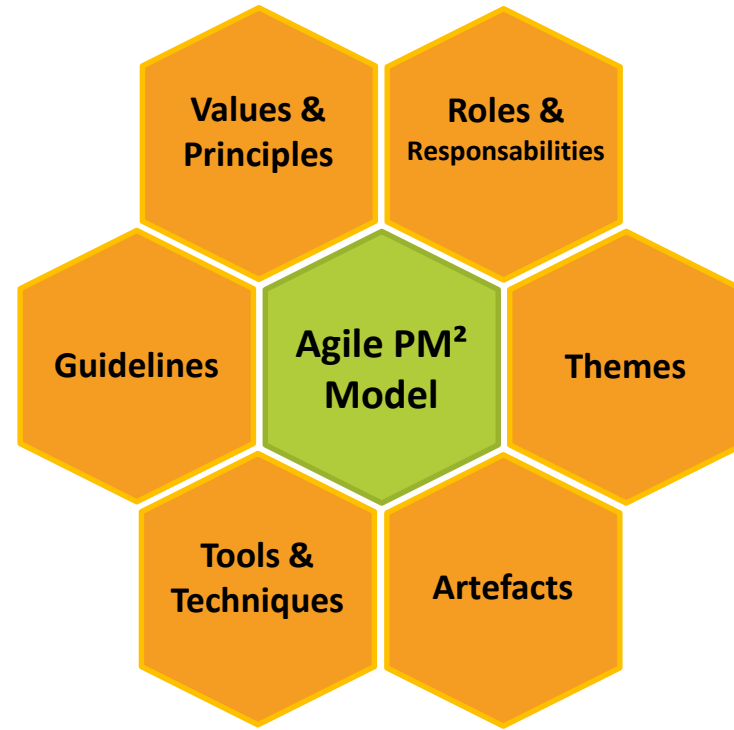


Nicos Kourounakis

- Overview
- Values and Principles
- Agile PM² within the Organisation
- Project Lifecycle
- Project organisation – Governance Model
- Roles and Responsibilities
- Artefacts

Overview

- Agile PM² enables and supports the use of Agile practices in projects of the European Commission;
- Complies with the various IT Governance, Enterprise Architecture and Interoperability requirements.



Values and Principles

The Agile Manifesto provides a foundation for Agile PM², which is adapted to reflect the EC values and the experience from the past years of experience.

- **Individuals and interactions over processes and tools;**
- **Working solutions over comprehensive documentation;**
- **Stakeholder collaboration over contract negotiation;**
- **Responding to change over following a plan**

Just like for the Values, the Principles supporting Agile PM² have been adapted from the ones described in the Agile Manifesto:

- Deliver Value frequently through working **Solutions**;
- The primary measure of progress is the **usefulness of what has been delivered**;

Agile PM² within EC

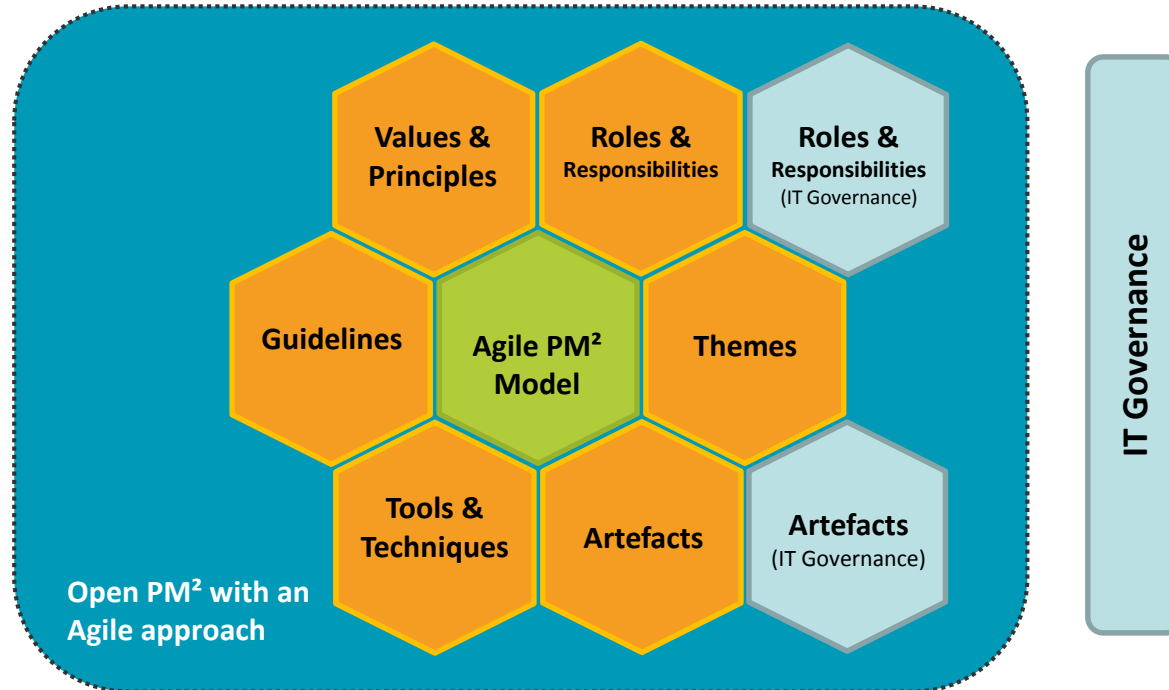
Agile and PM²

Decisions

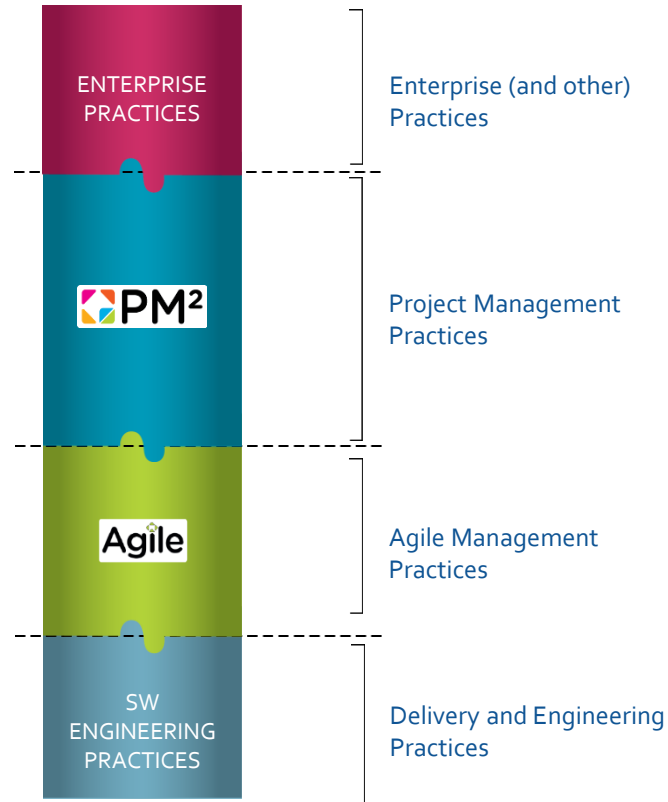
Communications

Policies

Audits

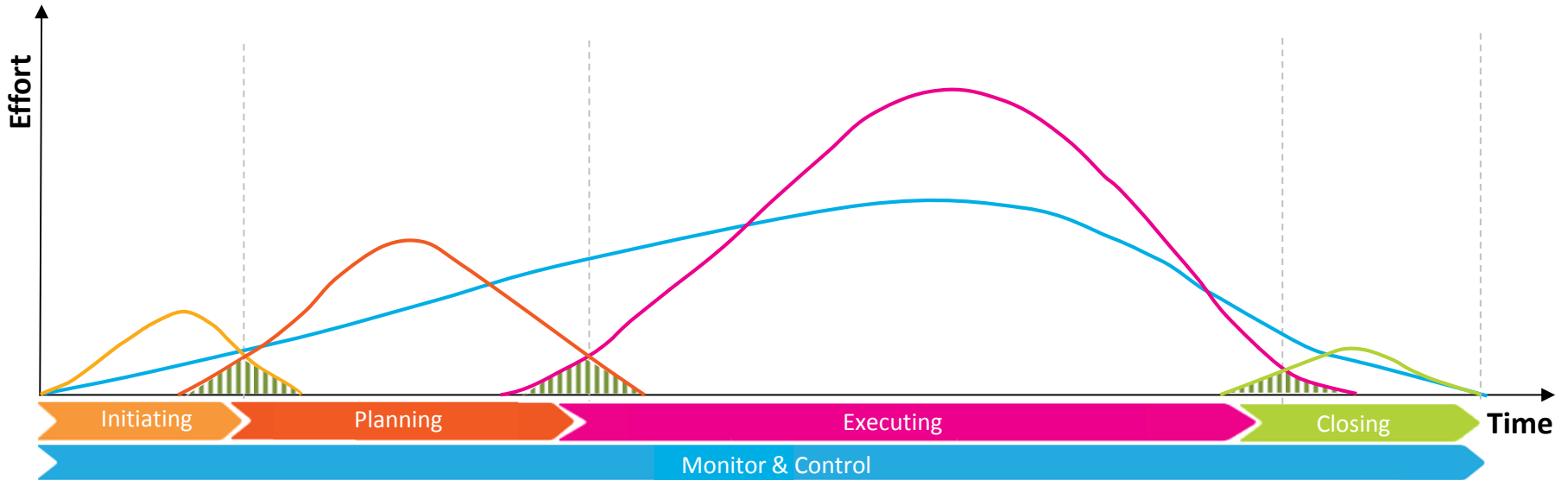


Positioning of Agile PM²

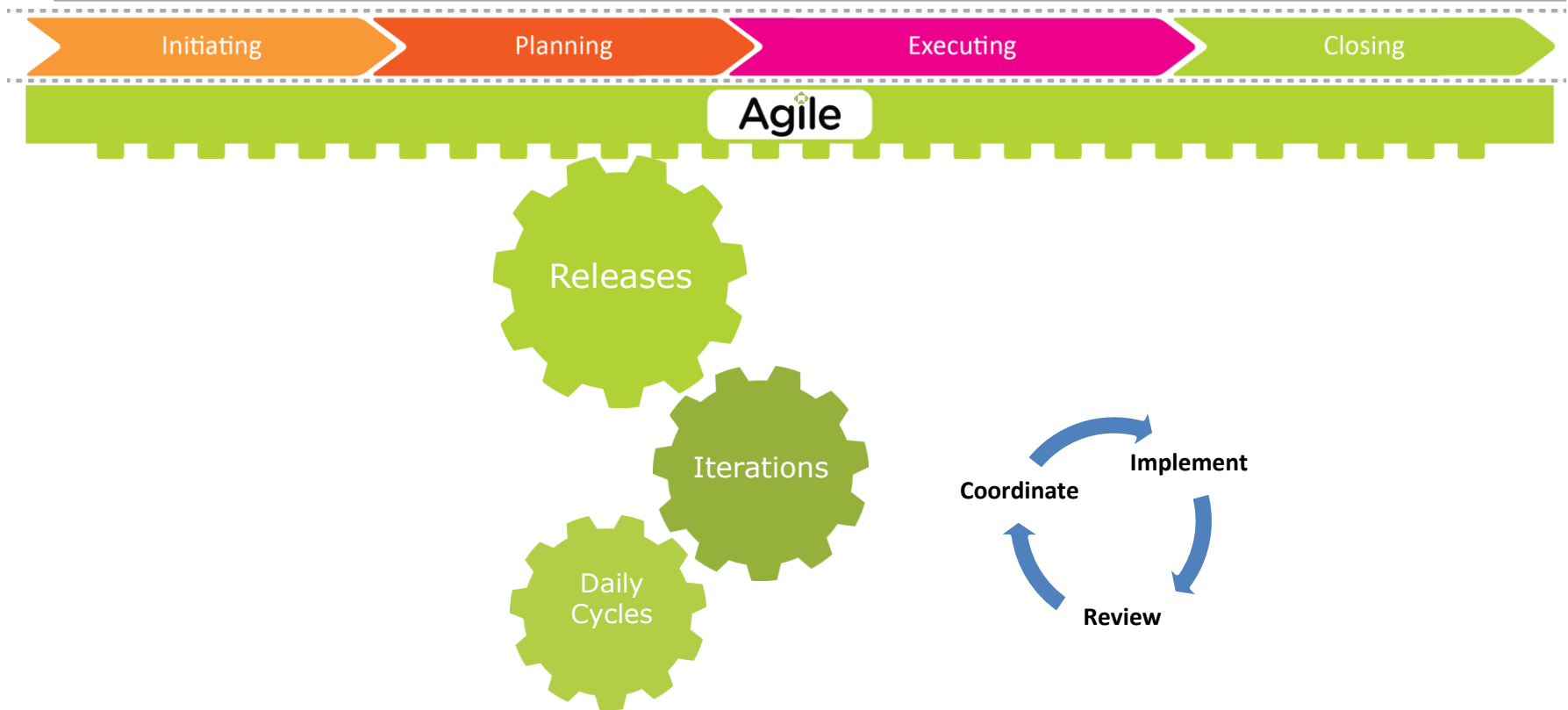


Project Lifecycle

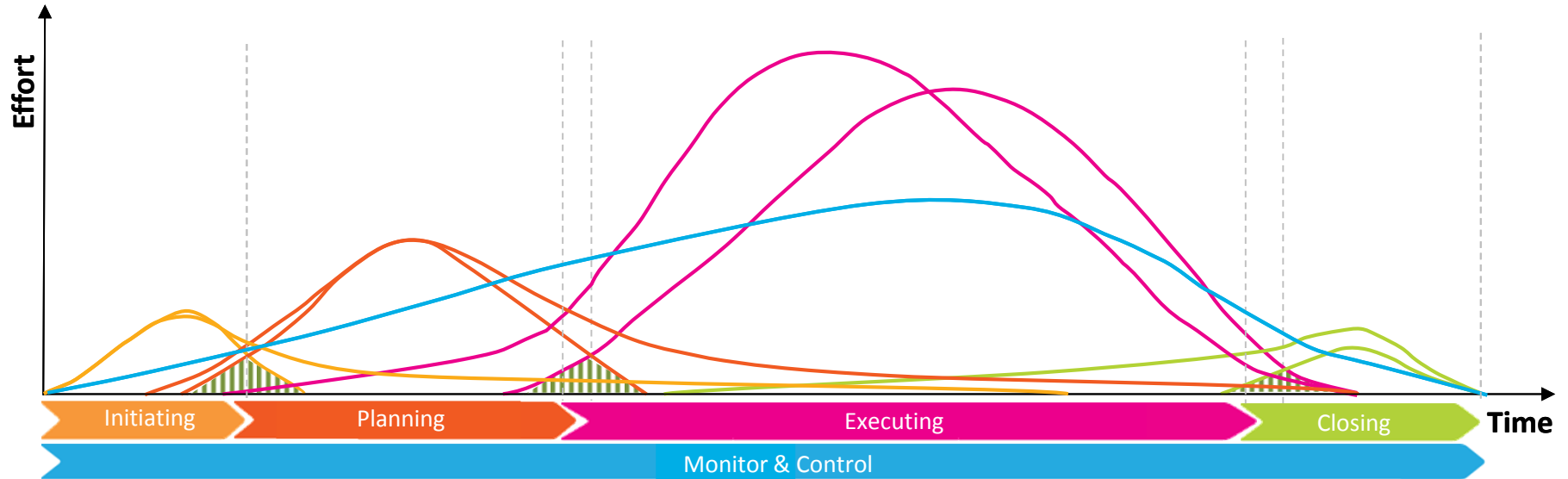
Project Phases



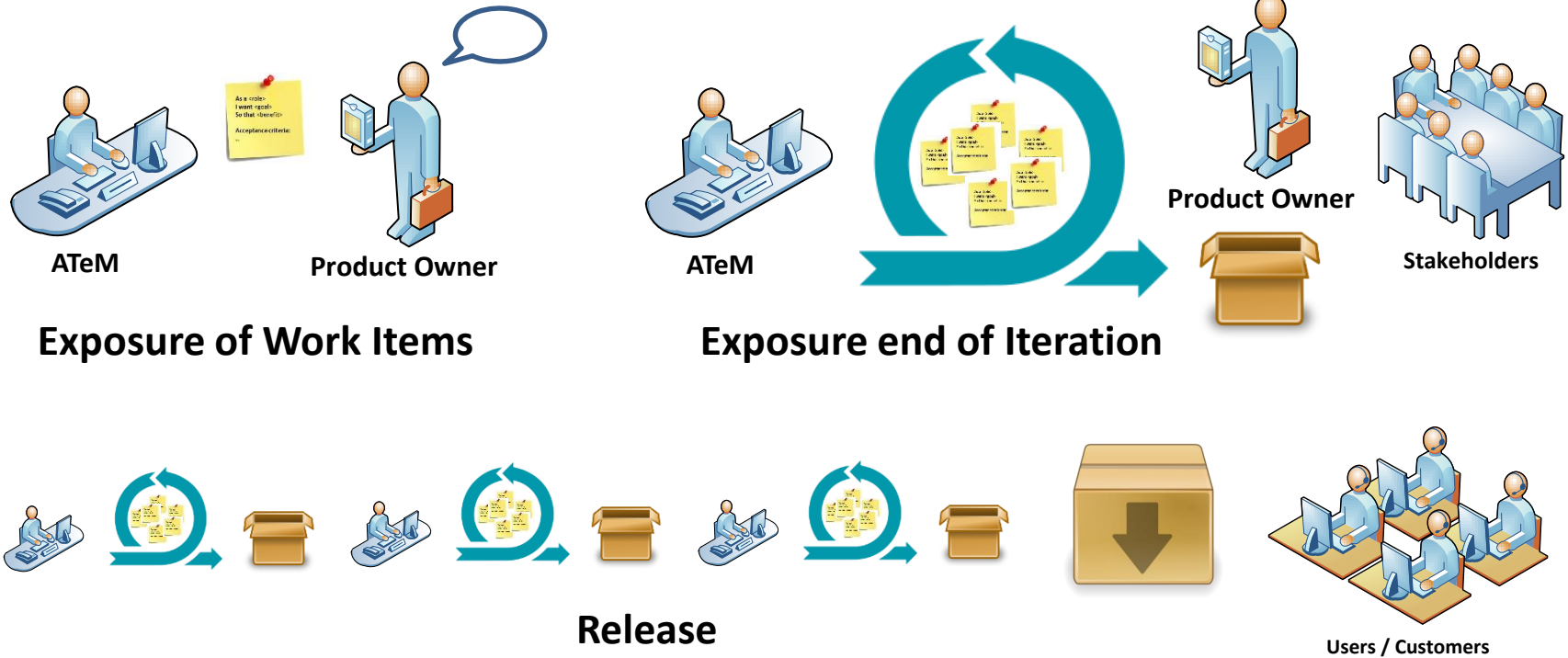
From Project phases to Daily Cycles



Project Phases

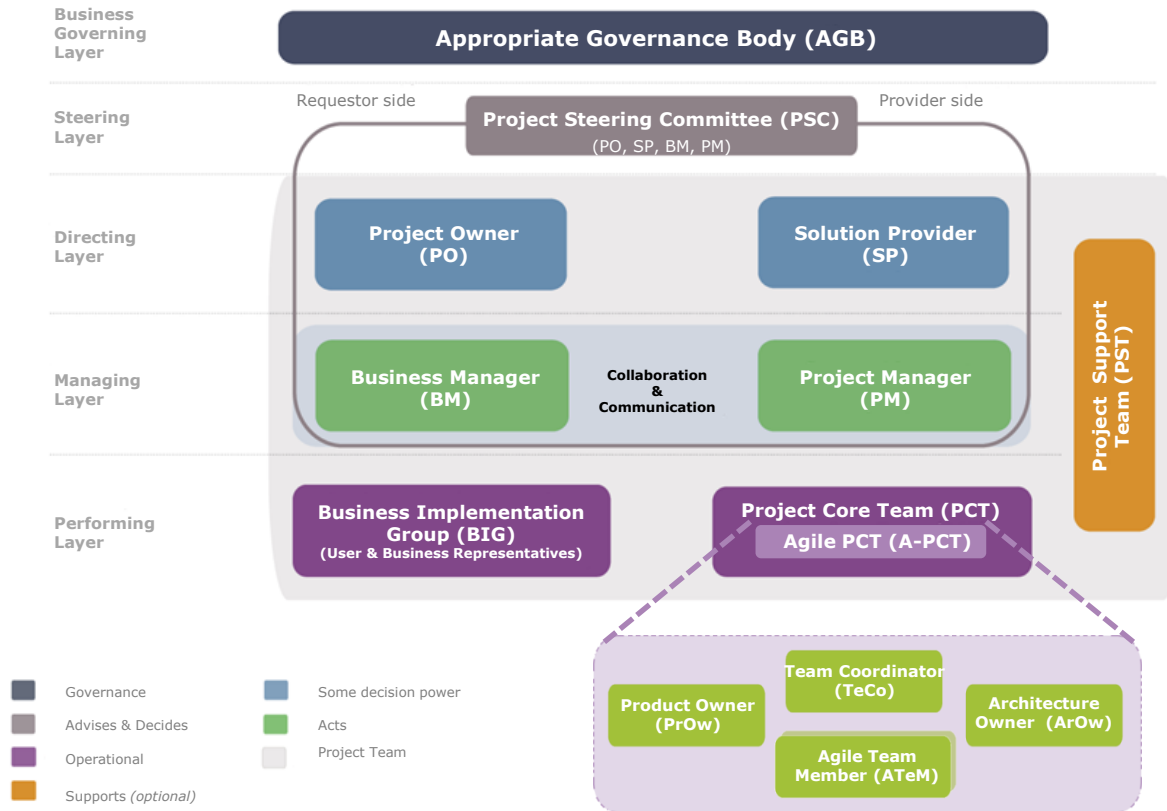


Exposing and Delivering Work



Project Organisation

Governance Model



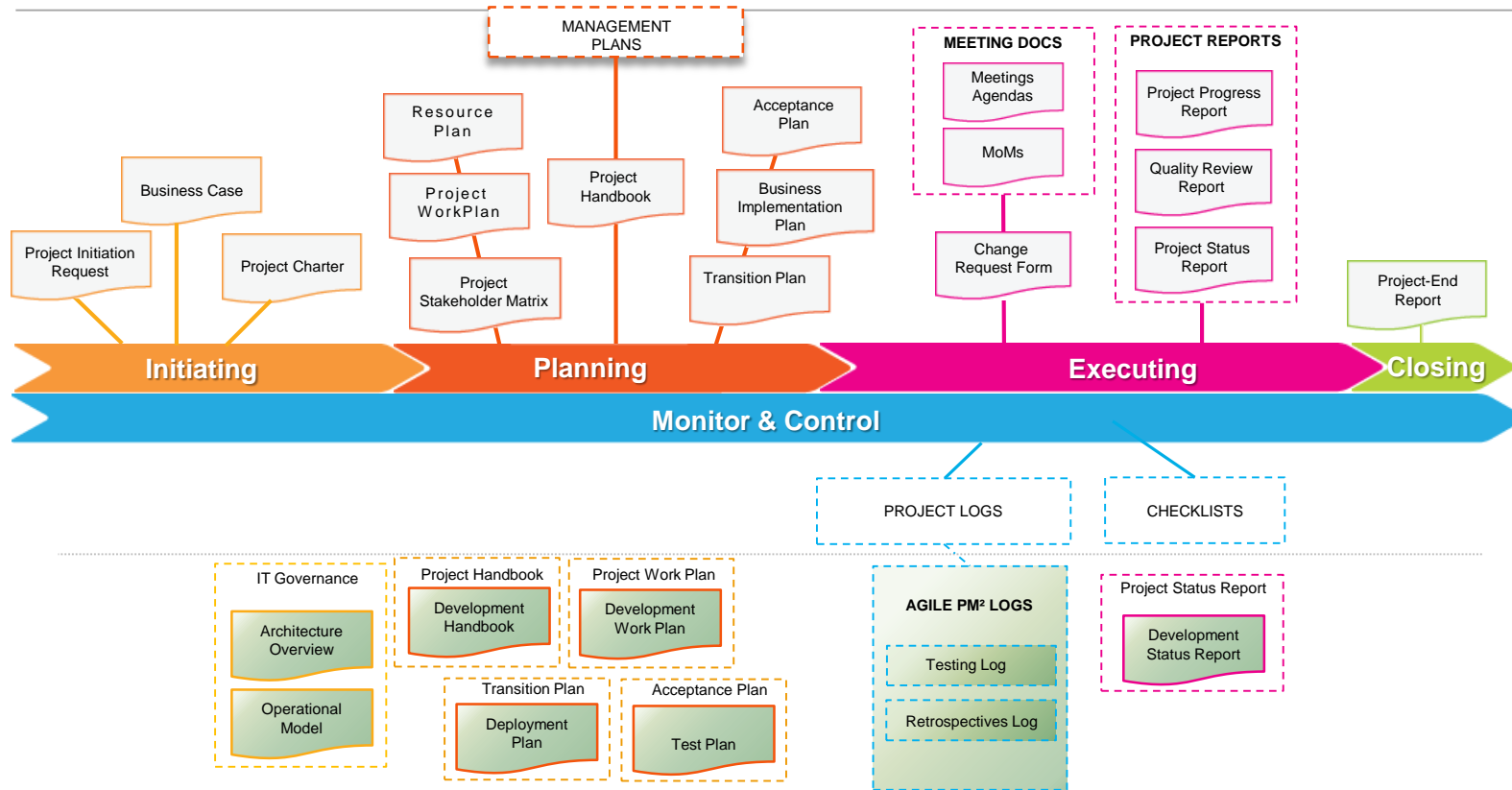
- **PrOw** – The ‘single voice of the stakeholders’ within the Agile Project Core Team. Should work, if possible, within the physical space of the team;
- **TeCo** - Facilitator and team coach whose main purpose is to allow the team to focus on achieving specific objectives and being successful. Synchronises with the PM;
- **ArOw** - Responsible for the architecture decisions for the Agile Project Core Team (A-PCT). Leads the initial architecture envisioning effort at the beginning of the project and ensures alignment with the guidelines and recommendations of the Architecture Office (AO);
- **ATeM** – Implements the solution. Has a set of skills that, put together with all the other ATeM, allows the team to deliver a solution.

Artefacts

Agile PM² groups the relevant artefacts in three different groups:

- **IT Governance** – These artefacts provide information requested by the Organisation IT Governance;
- **Agile Specific** – Capture information regarding the planning of specific processes, activities, releases, iterations and other milestones;
- **Coordination & Reporting** – Capture information needed to coordinate the overall project activities with those undertaken by the A-PCT.

Artefacts Landscape



Thank you!

Q&A