

What is PM² Project Management?

PM² Project Management is a methodology developed and supported by the European Commission. Its purpose is to enable project teams to manage their projects effectively and deliversolutions and benefits to their organisations and stakeholders.

The PM² Project Management is a light and easy to implement methodology suitable for any type of project. It has been custom developed to fit the specific needs, culture and constraints of EU Institutions and Public Administrations, but also incorporates elements from globally accepted best practices, standards and methodologies.

It provides:

- A Project Governance Model (i.e. roles & responsibilities)
- A Project Lifecycle (i.e. project phases)
- A set of Processes (i.e. project management activities)
- A set of Project Artefacts (i.e. templates and guidelines)
- A set of Mindsets (i.e. effective beliefs and behaviours)

The PM² Methodologies are methodologies developed by the European Commission, published by the Publications Office of the European Union and open to all thanks to the Digital Europe Programme.

The PM² Methodologies are aligned and interconnected. Their purpose is to provide guidance for managing the entire lifecycle of projects, programmes, and portfolios. They incorporate elements from a wide range of globally accepted best-practices as well as from relevant operational experience from the European Institutions.

The PM² Methodologies include PM² Project Management, PM²-Agile, PM² Programme Management, and PM² Portfolio Management.



QUICKSTART STEPS

1 Define a Project Governance and create a Business Case

- Define the Project Steering Committee (PSC)
- Provide the justification for the project, capture the business requirements and establish its budgetary constraints

Business Case

2 Identify Stakeholders and create the Project Charter

- Define the project scope
- Identify those Stakeholders who should contribute to the Project Charter
- Capture the high-level requirements, assumptions and constraints
- Decide on a project approach, estimate required resources, costs and timing

Project Charter

3 Set up the Project Logs

- Setup the Risk Log, Issue Log, Decision Log and the Change Log. These logs will be used to document the management of Risks, Issues, Decisions and project Changes

Issue Log, Risk Log, Decision Log, Change Log

4 Start the Project Planning with a Meeting

- Invite all necessary participants to the planning meeting
- Go over the Project Charter and ensure a common understanding
- Communicate the next steps for the planning phase

Planning Kick-off Meeting

5 Tailor the Project Management approach

- Decide which planning documents to use and how they should be tailored
- Define rules, assign team responsibilities and define a conflict resolution process

Project Handbook

6 Develop a Communications Management Plan

- Identify all information requirements for the effective management of the project's communications
- Decide on the strategy, goals, frequency, format and recipients of the communication activities

Communication Plan

7 Create the Project Work Plan

- Break down the work that needs to be done in smaller and more manageable pieces (Work Breakdown)
- Estimate the effort and cost for each piece of work
- Establish the detailed budgetary and resource requirements
- Create a work schedule (identify dependencies, assign resources and dates)

Project Work Plan

CONTACT

European Commission
DIGIT - DG for Digital Services
DIGIT A.2 – Procurement & Programme Management Solutions
Methodologies Office

DIGIT-PM2@ec.europa.eu

USEFUL LINKS

» Learn more at the PM² Methodologies Website
<https://pm2.europa.eu/>

» Download the PM² Methodologies Guides from the Publications Office of the European Union Website
<https://op.europa.eu/>

» Sign up for free online PM² training courses at the EU Academy Website
<https://academy.europa.eu/>

» Join the PM² Community at the Interoperable Europe Portal
<https://joinup.ec.europa.eu/>



Supported by the
Digital Europe Programme

© European Union, 2024

V 4

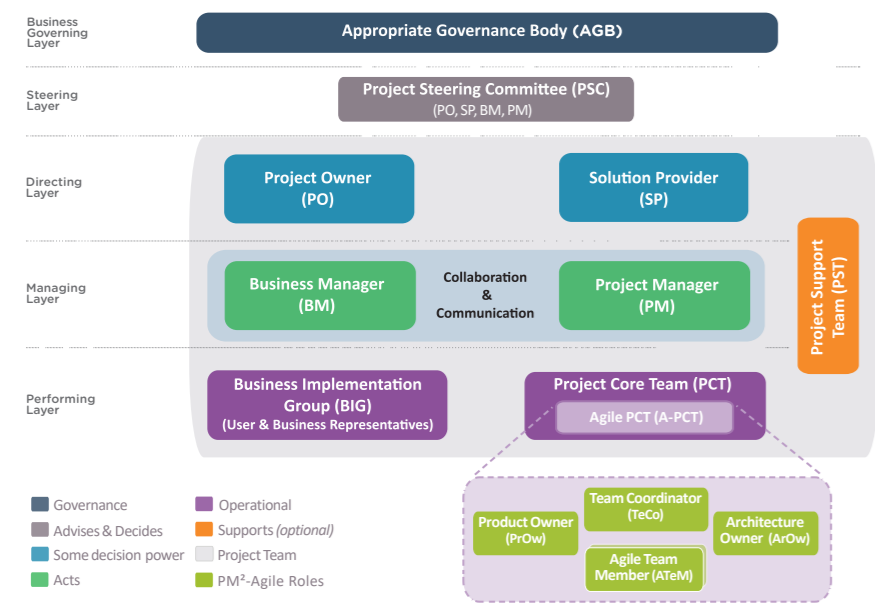


PM² Project Management Methodology

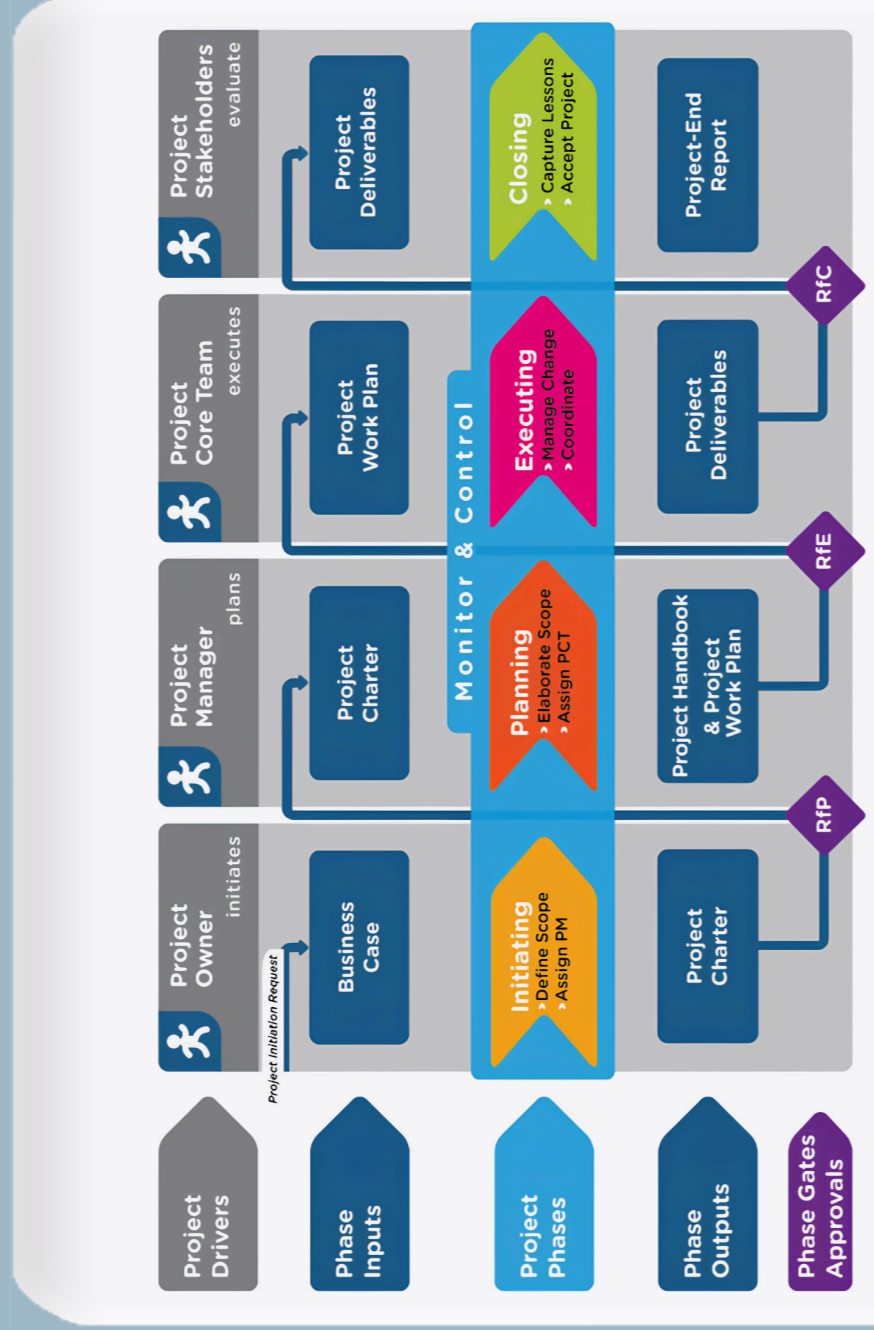
Highlights and Benefits

- Contents
- ▶ What is PM² Project Management?
 - ▶ Quickstart Steps
 - ▶ PM² Project Organisation
 - ▶ PM² Phases, Drivers, Key Artefacts and Activities

PM² Project Organisation



Relationships between strategy, project, programme, portfolio and operations



PM² Phases, Drivers, Key Artefacts and Activities

Phase	Phase Drivers	Project Phases	Phase Gates / Approvals	Phase Inputs and Outputs
Initiating	The Project Drivers differ from phase to phase within the PM ² project lifecycle. The Project Owner (PO) is the main driver during the initiation of the project and the Project Manager (PM) drives the planning phase.	Define initial scope, create the Business Case and Project Charter.	Ready for Planning	Project Initiation Request, Business Case
Planning	The Project Core Team (PCT) drives the execution of the project plan and the creation of the project deliverables while the Project Stakeholders are designated as the main driver of the closing phase.	Elaborate scope, create the PM Plans and assign the Project Core Team.	Ready for Executing	Project Charter
Executing		Execute the plan, manage communications and create the project deliverables.	Ready for Closing	Project Work Plan, Project Deliverables
Closing		Transfer product ownership and report on the project's performance (Project-End Report).		Project Deliverables, Project-End Report
Monitor & Control		Monitor project variables, measure progress, manage changes and identify actions to address risks and issues.		Project Deliverables, Project-End Report

Phase	Activities	Artefacts	Checklists
INITIATING	<ul style="list-style-type: none"> Document the idea/need Identify key stakeholders (and their needs) Create a business justification for the project Define the project scope and organisation 	<ul style="list-style-type: none"> Project Initiation Request Business Case Project Charter Project Logs (setup) 	<ul style="list-style-type: none"> Monitor/Project Performance Control Schedule Control Cost Manage Stakeholders Manage Requirements Manage Project Change Manage Risks
PLANNING	<ul style="list-style-type: none"> Organise a Kick-off Meeting Tailor the PMF process Assign Roles & Responsibilities Elaborate project scope Develop work breakdown & project schedule Develop Project Plans Distribute plans to stakeholders 	<ul style="list-style-type: none"> Planning Kick-off/MoM Project Stakeholder Matrix Project Handbook Roles & responsibilities Management plans <ul style="list-style-type: none"> Team Charter Project Work Plan Outsourcing Plan Deliverables Acceptance Plan Transition Plan Business Implementation Plan 	<ul style="list-style-type: none"> Manage Issues and Decisions Manage Quality Manage Deliverables Acceptance Manage Transition Manage Business Implementation Manage Outsourcing
EXECUTING	<ul style="list-style-type: none"> Organise a Kick-off Meeting Coordinate project execution Conduct Meetings Assure quality Create project reports Distribute information Ensure deliverables acceptance 	<ul style="list-style-type: none"> Executing Kick-off Agenda/MoM Meeting Agendas/MoMs Change Requests Quality Review Report Project Status Report Project Progress Report Deliverables Acceptance Note 	<ul style="list-style-type: none"> Risk Log Issue Log Decision Log Change Log Project Work Plan Requirements Document
CLOSING	<ul style="list-style-type: none"> Organise a Project-End Review Meeting Capture lessons learned and post-project recommendations Get final project acceptance Release project resources Archive project information Close the project 	<ul style="list-style-type: none"> Project-End Review Agenda/MoM Project-End Report Lessons Learned <ul style="list-style-type: none"> Best Practices Post Project Recommendations Project Acceptance Note 	<ul style="list-style-type: none"> Phase-exit Review checklist Quality Review checklist Deliverable Acceptance checklist Transition checklist Business Implementation checklist Stakeholder checklist